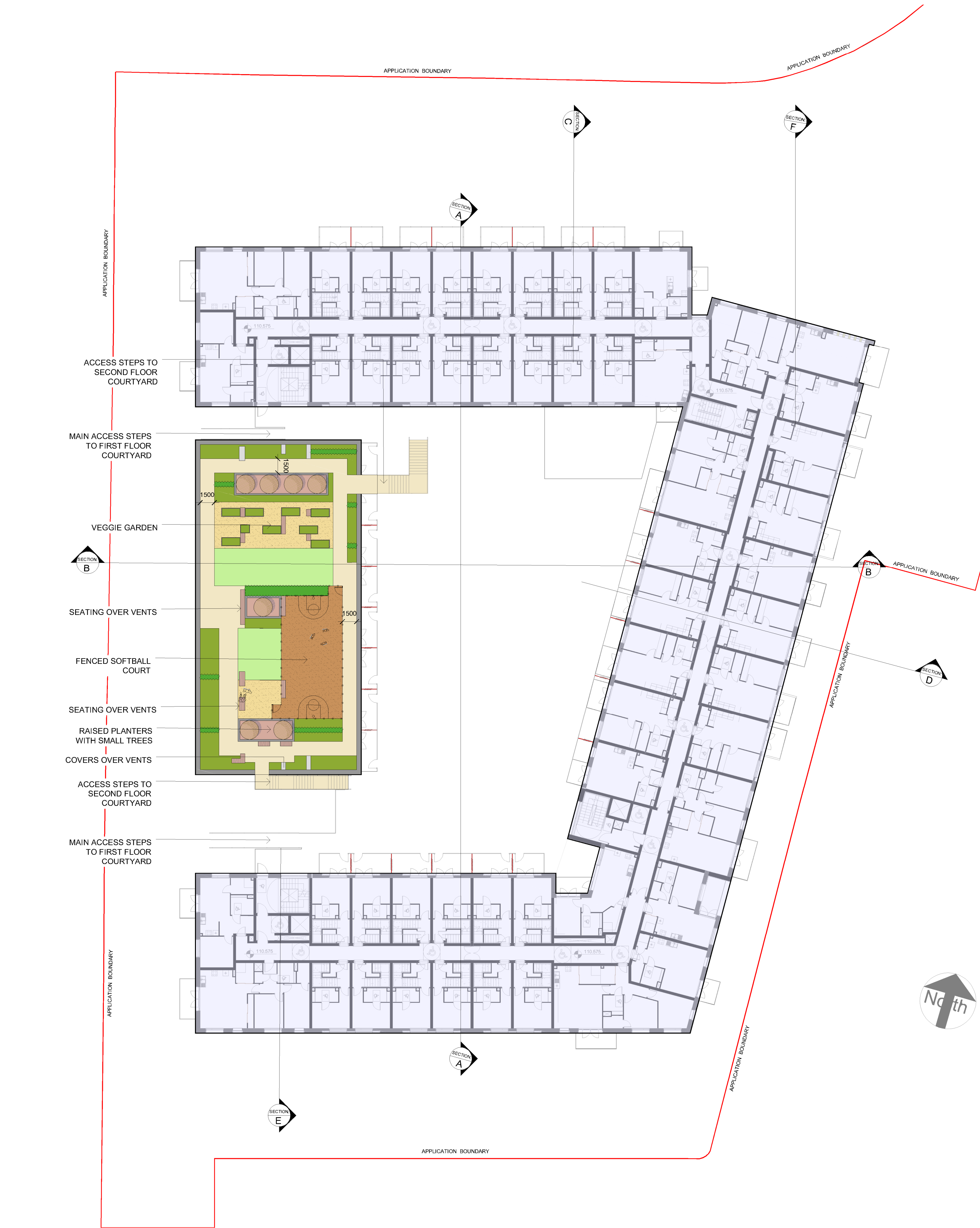


LEGEND

- PROPOSED TREES**
 - 7no. *Acer rubrum* 'Scanlon' 18-20cm gth, 6m ht
- HEDGE - 14 l.m = 42no.**
 - *Prunus lusitana*, 60 - 90cm ht., RB, at 3/m
 - *Fagus sylvatica*, 90 - 120cm ht., RB, at 3/m
- PROPOSED SHRUBS BEDS - 160sq.m = 640no.**
 All plants supplied at 3lt containers, except bulbs.
 Shrubs planted at 4/m², bulbs at 15/m² over 50% of area.
 Typical plant species as follows:
Amelanchier lamarkii, *Azalea* 'Golden Wedding', *Berberis t. Amstelveen*, *Crococsmia* sp., *Deutzia rosea* 'Campanulata', *Forcythia x intermedia*, *Genista lydia*, *Geranium macr. Spessart*, *Hedera helix* 'Green Ripple', *Helleborus orientalis*, *Hemerocallis*, *Hydrangea aspera sargentiana*, *Hypericum calycinum*, *Lavandula ang. Hitcote*, *Miscanthus sin. Femer Osten*, *Pennisetum viridescens*, *Perovskia 'Bluespire'*, *Primula* sp., *Rosmarinus 'Prostratus'*, *Rubeckia 'Goldstrum'*, *Stipa tenuissima*. Climbers: *Clematis 'Early Sensation'*, *Solanum crispum 'Glasnevin'*, *Westeria f. Alba*.
 Under-planting of bulbs - *Fritillaria meleagis*, *Galanthus nivalis*, *Hycinthoides non-scripta*, *Narcissus 'Bridal Crown'*, *Tulipa 'Super Parrot'*, *Muscari latifolium*, *Scilla sibenca*
- RAISED PLANTERS, Glazed Bricks**
 (see list above for plants species)
- AMENITY GRASS AND GRASSED MOUNDS**
- FEATURE PAVING CONCRETE FLAGS**
- SEATING, Timber and steel**
- DUST GRAVEL**
- RUBBER SAFETY SURFACE**

NOTES

1. Drawings issued for planning purposes only. All landscaping is subject to the approval of the local authority.
2. All landscaping will be carried out by a competent landscape contractor and in accordance with the BS3936.
3. Topsoil will be supplied in accordance BS3882. All trees will be planted into a 1m³ of topsoil, ornamental shrubs into 45cm depth, and grass into 15cm depth.
4. Trees sizes will be as indicated and all trees will be staked and tied appropriately.
5. Grass areas are to be seeded with a general purpose amenity grass mix suitable for the site conditions.
6. Following the completion of all construction works, a 3 year management plan is to be prepared to ensure the longevity of the existing and newly planted landscape. The landscaping will be maintained by the contractor for a minimum 18 months defects liability period, and there after for 12 month running periods.
7. Any trees, shrubs or hedges planted which are removed, die, become severely damaged or become seriously diseased within three years of planting shall be replaced within the next planting season by trees, shrubs or hedging plants of similar size and species to those originally required to be planted.
8. Services close to new trees to be constructed in accordance with BS 5837:2012 Table 3.
9. All street lamp posts to be min. 6m from trees.
10. See landscape design rationale report for green roof build-up over basement car-park.



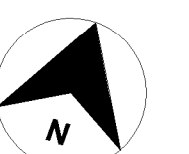
SECOND FLOOR COURTYARD - 1:250 @ A1 & 1:500 @ A3

C	11/09/20	Revised Layout
B	29/07/20	Revised Layout
A	26/06/20	Revised Layout

REV	DATE	AMENDMENT
-----	------	-----------

CUNNANE STRATTON REYNOLDS
LANDSCAPE PLANNING & DESIGN

DUBLIN OFFICE
 3 MOLESWORTH PLACE DUBLIN 2
 TEL 01 661 0419 FAX 01 661 0431
 EMAIL info@cstrandplan.ie



PROJECT: UNITS 66 & 67 FOURTH AVENUE COOKSTOWN INDUSTRIAL ESTATE TALLGH, DUBLIN 24	DATE: SEPT-2020
DRAWING: LANDSCAPE MASTERPLAN - SECOND FLOOR COURTYARD	SCALE: 1:250 @ A1 & 1:500 @ A3
	DRAWN: PG
	CHECKED: LC
	DRAWING NO: 16360-2-122