

DESIGN INTENT DRAWING

FLOOR PLAN KEY:

- EH - ENTRANCE HALL
- ST - STORAGE
- HP - HOT PRESS
- KLD - KITCHEN+LIVING+DINING ROOM
- PAS - PRIVATE AMENITY SPACE



1 APT. TYPE - 2A
1: 100

APARTMENT TYPE 2A
- 2 BED, 4 PERSON APARTMENT
- NET INTERNAL AREA (NIA)
Areas shown in plan
- GROSS INTERNAL AREA (GIA)
76.3 sqm (min req. 73 sqm)
- DUAL ASPECT



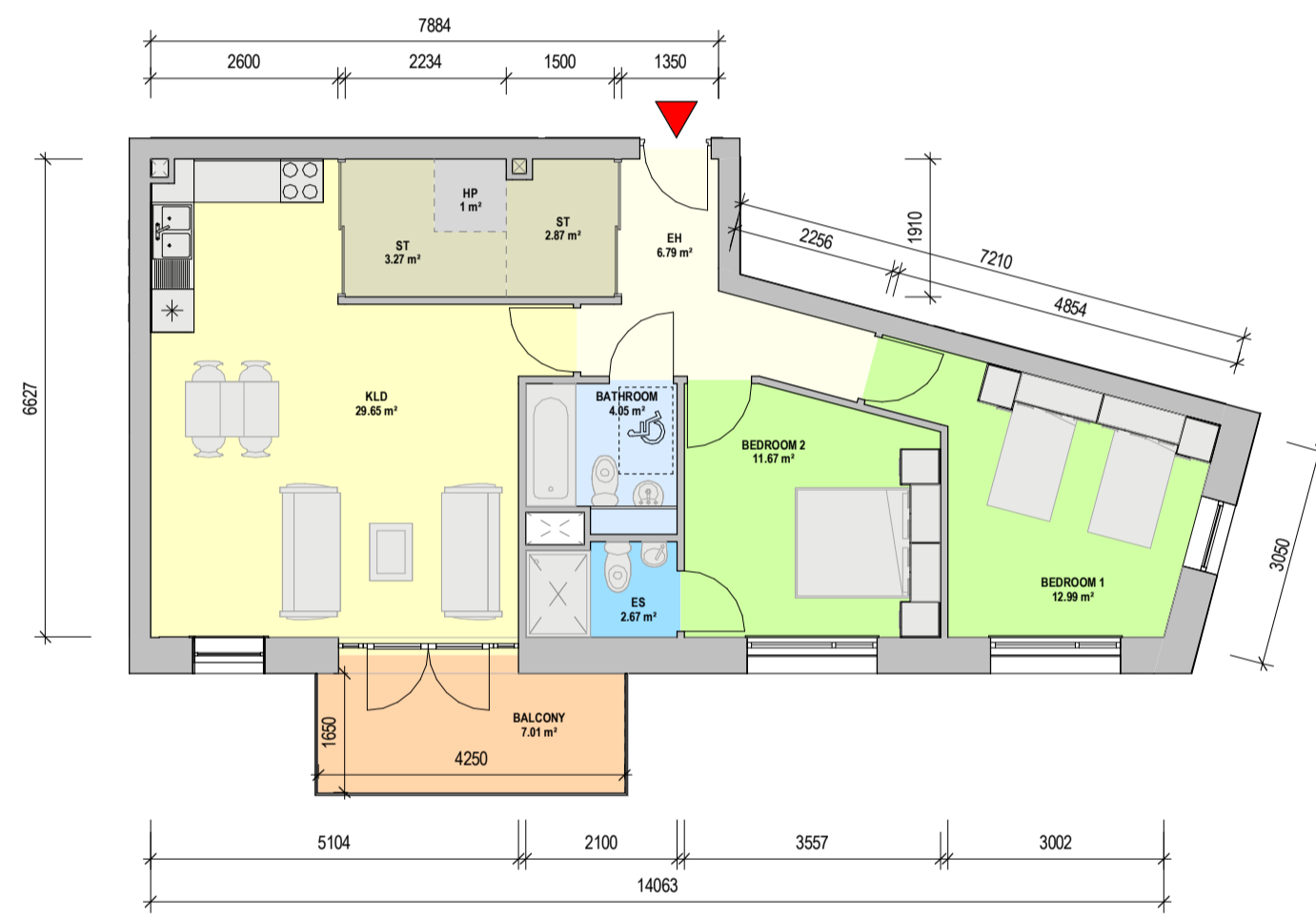
2 APT. TYPE - 2B
1: 100

APARTMENT TYPE 2B
- 2 BED, 4 PERSON APARTMENT
- NET INTERNAL AREA (NIA)
Areas shown in plan
- GROSS INTERNAL AREA (GIA)
76.3 sqm (min req. 73 sqm)
- DUAL ASPECT



3 APT. TYPE - 2C
1: 100

APARTMENT TYPE 2C
- 2 BED, 4 PERSON APARTMENT
- NET INTERNAL AREA (NIA)
Areas shown in plan
- GROSS INTERNAL AREA (GIA)
75.0 sqm (min req. 73 sqm)
- SINGLE ASPECT



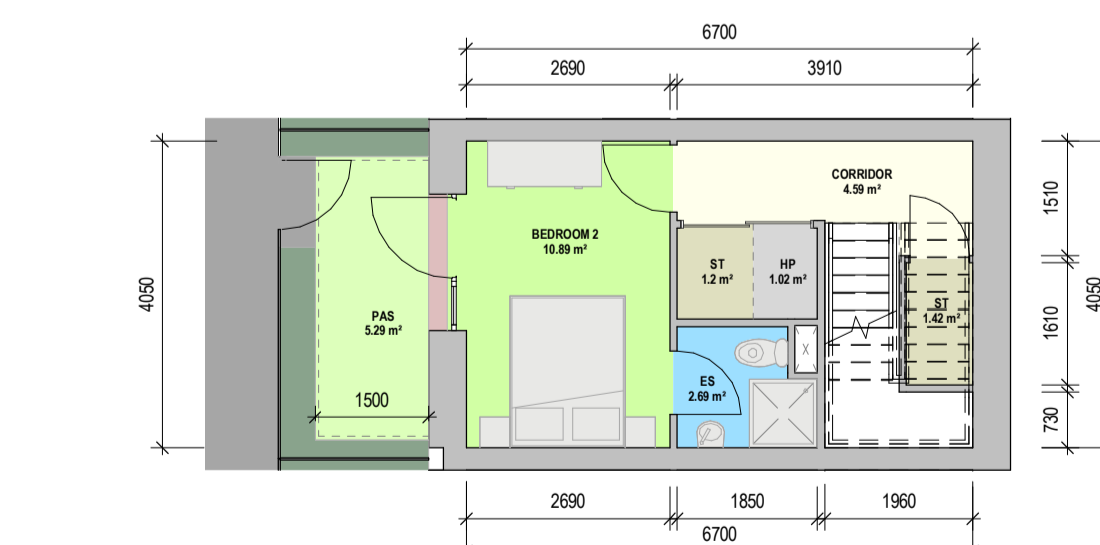
4 APT. TYPE - 2D
1: 100

APARTMENT TYPE 2D
- 2 BED, 4 PERSON APARTMENT
- NET INTERNAL AREA (NIA)
Areas shown in plan
- GROSS INTERNAL AREA (GIA)
78.1 sqm (min req. 73 sqm)
- DUAL ASPECT



5 APT. TYPE - 2E
1: 100

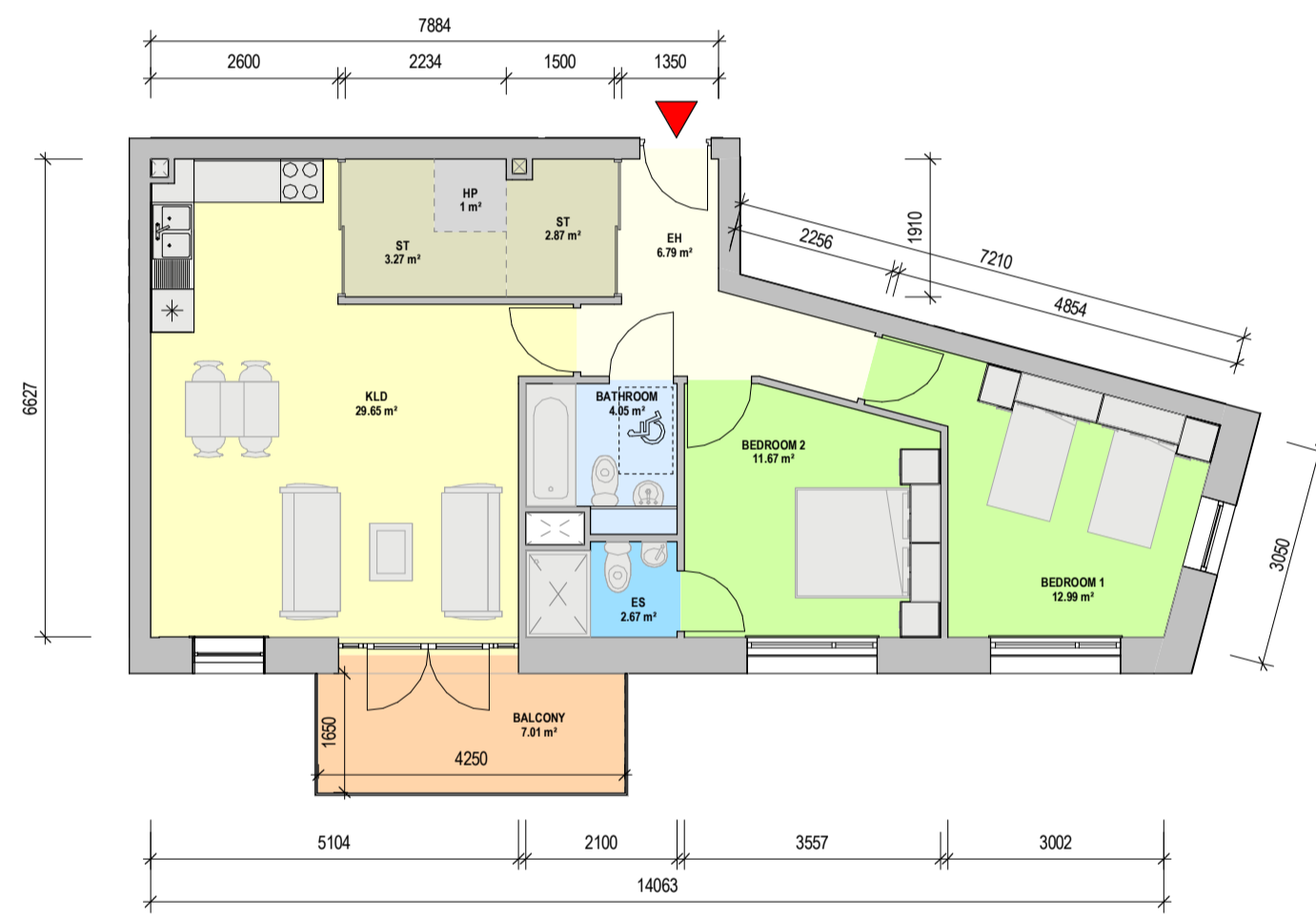
APARTMENT TYPE 2E
- 2 BED, 4 PERSON APARTMENT
- NET INTERNAL AREA (NIA)
Areas shown in plan
- GROSS INTERNAL AREA (GIA)
74.5 sqm (min req. 73 sqm)
- SINGLE ASPECT



DUPLEX LOWER LEVEL

3 APT. TYPE - 2C
1: 100

APARTMENT TYPE 2C
- 2 BED, 4 PERSON APARTMENT
- NET INTERNAL AREA (NIA)
Areas shown in plan
- GROSS INTERNAL AREA (GIA)
75.0 sqm (min req. 73 sqm)
- SINGLE ASPECT



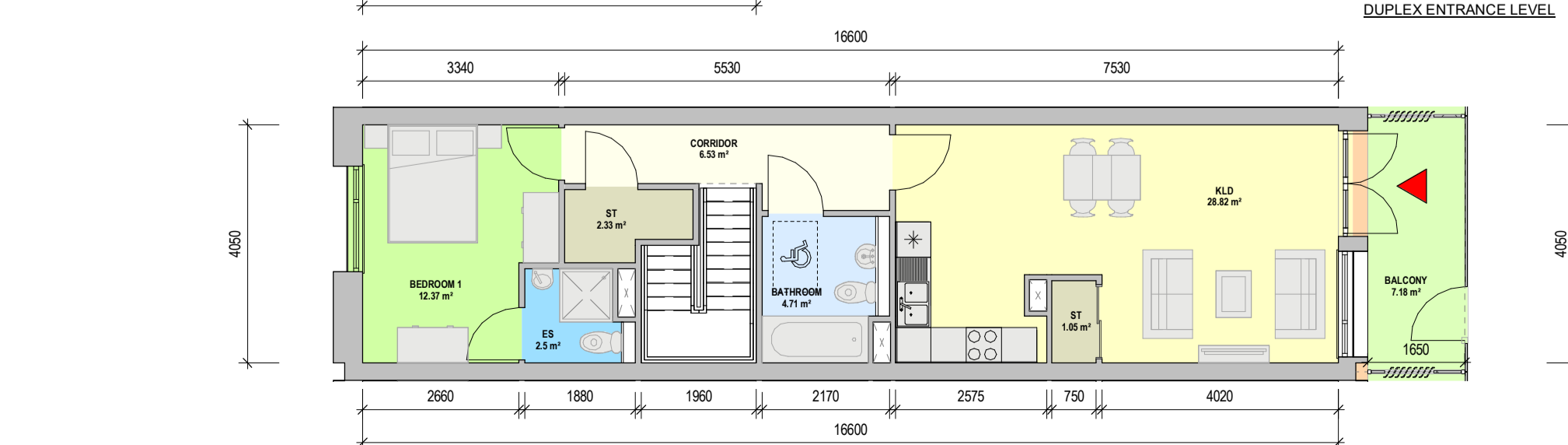
4 APT. TYPE - 2D
1: 100

APARTMENT TYPE 2D
- 2 BED, 4 PERSON APARTMENT
- NET INTERNAL AREA (NIA)
Areas shown in plan
- GROSS INTERNAL AREA (GIA)
78.1 sqm (min req. 73 sqm)
- DUAL ASPECT



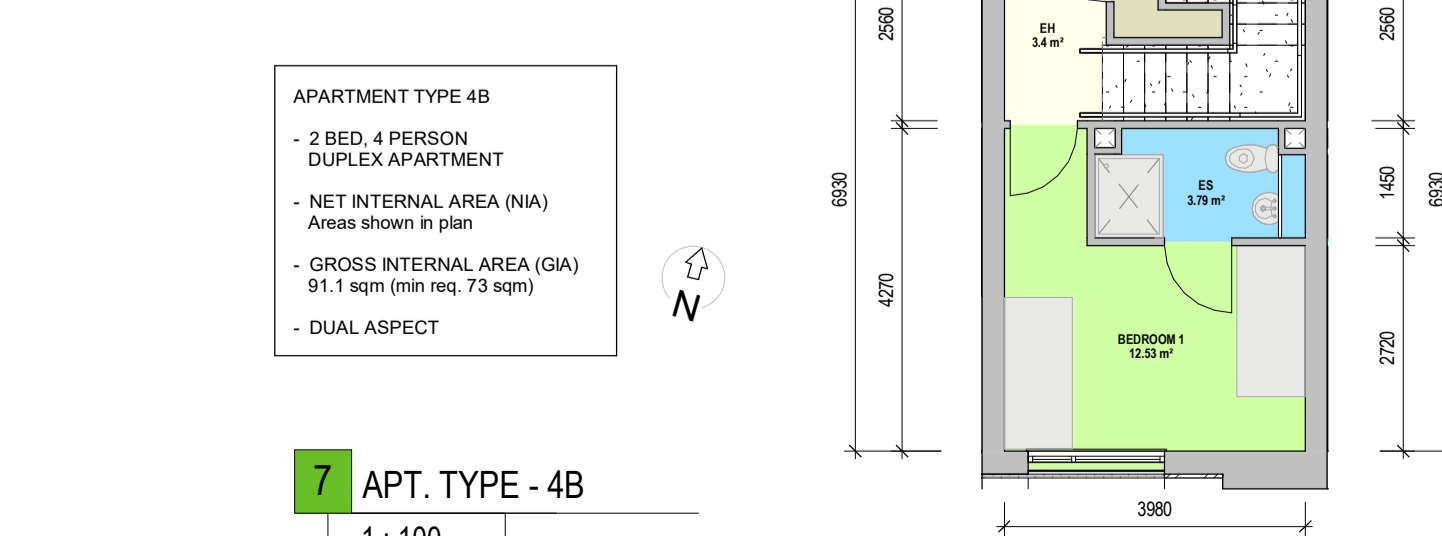
5 APT. TYPE - 2E
1: 100

APARTMENT TYPE 2E
- 2 BED, 4 PERSON APARTMENT
- NET INTERNAL AREA (NIA)
Areas shown in plan
- GROSS INTERNAL AREA (GIA)
74.5 sqm (min req. 73 sqm)
- SINGLE ASPECT



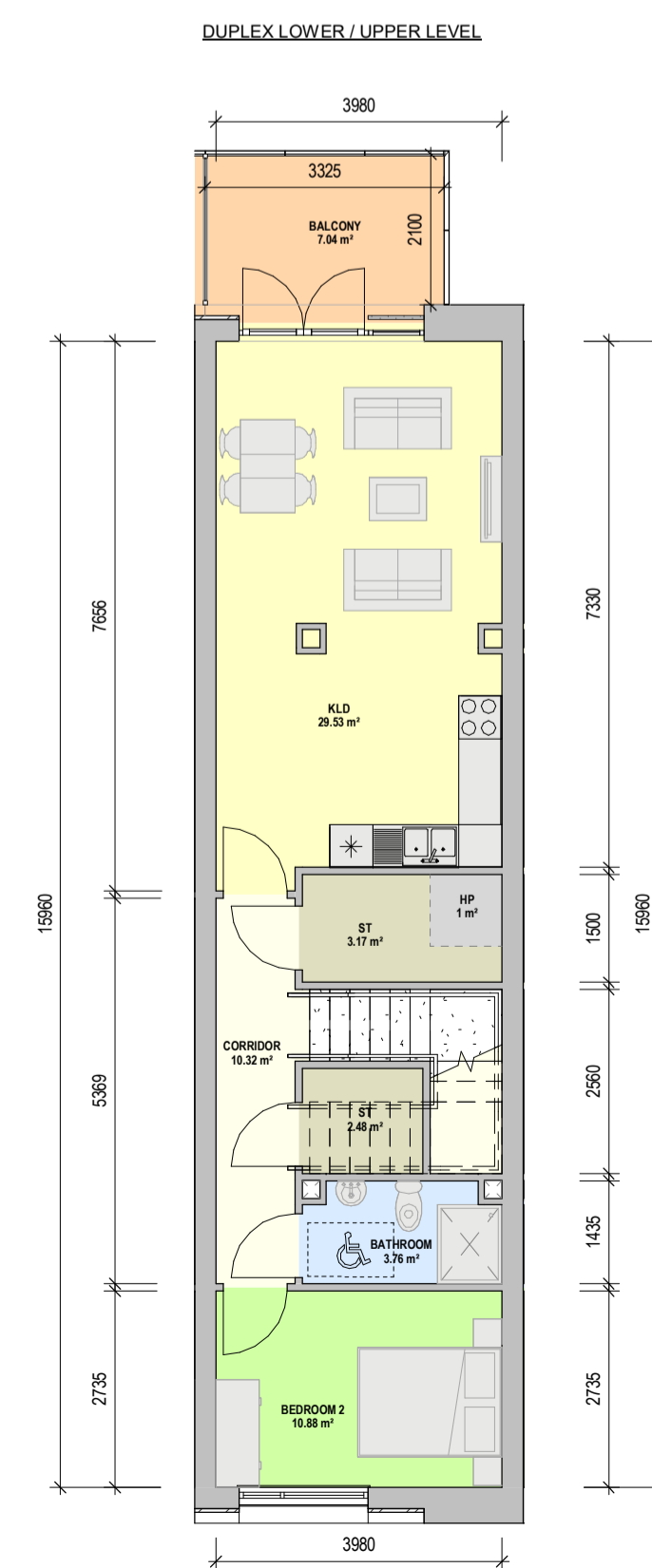
6 APT. TYPE - 4A
1: 100

APARTMENT TYPE 4A
- 2 BED, 4 PERSON DUPLEX APARTMENT
- NET INTERNAL AREA (NIA)
Areas shown in plan
- GROSS INTERNAL AREA (GIA)
94.4 sqm (min req. 73 sqm)
- DUAL ASPECT



7 APT. TYPE - 4B
1: 100

APARTMENT TYPE 4B
- 2 BED, 4 PERSON DUPLEX APARTMENT
- NET INTERNAL AREA (NIA)
Areas shown in plan
- GROSS INTERNAL AREA (GIA)
91.1 sqm (min req. 73 sqm)
- DUAL ASPECT



DUPLEX LOWER / UPPER LEVEL

APARTMENT ROOM LEGEND	
[Green Box]	BEDROOM
[Yellow Box]	LIVING ROOM
[Blue Box]	BATHROOM
[Light Blue Box]	EN SUITE
[Grey Box]	STORAGE
[Orange Box]	BALCONY
[Pink Box]	PRIVATE AMENITY SPACE
[Light Green Box]	CORRIDOR
[Dark Grey Box]	HOT PRESS

SYMBOL LEGEND	
[Red Triangle]	APARTMENT ENTRANCE
[Circle with Dashed Line]	1200mm X 750mm TURNING SPACE

Rev	Description	Date	Dr by	App by

PLANNING

Client:
Steelworks Property Developments Limited

Project:
Cookstown Cross
Units 66 & 67, Fourth Avenue, Cookstown Industrial Estate

Drawing Title:
PROPOSED APARTMENT TYPES - 2 BED TYPES

Drawn	Checked	Paper Size	Scale	Date
DP	CM	A1	As Indicated	22/09/2020

Project No.	Drawing No.	Classification	Revision
PE15058	001201		

File Name:
PE15058-CWO-ZZ-DR-A-001201

Status:
S2 - Suitable for Information



No.1 Sarsfield Quay, Dublin 7, D07 R9FH
t: 01 518 0170 e: admin@cwoarchitects.ie
Dublin 1 Cork 1 Galway 1 London 1 UK & Europe +
www.cwoarchitects.ie